

JOEWELL PRODUCT GUIDE



THE PROFESSIONAL EDGE

The hairstyle trends - the size of the hand which holds the scissors - the difference in hair characteristics.....

Scissors are always challenged by the designs and functions matching the specific needs of customers.

Through our commitment to research and development, JOEWELL TOKOSHA continuously works to create products to meet the needs of our customers.

Our pursuit of quality never ends.

We constantly seek to bring the high level of quality to our products. The precision of our products is the result of our machine engineering ability coupled with our detailed craftsmanship for essential components.

Our desire is customer satisfaction.

Joewell has more than 200 models sold in total including the standard model for the global market and models for each country. The models are appreciated by hairstylists around the world as the top brand of hairdressing scissors made in Japan.

鋏

HANDMADE
IN
IWATE
JAPAN



Iwate Factory



JOEWELL Factory -Iwate,Japan-

Our pride is our factory equipped with our state of the art equipment which is the largest of its kind dedicated to manufacturing hair cutting scissors in Japan. Our objective to increase customer satisfaction with our new product starts with the review of the design, calculation process, setting standard requirements for our manufacturing line through to our quality control process, all with the goal to provide the best suited, best product for the customer.

Computer control and Handmade

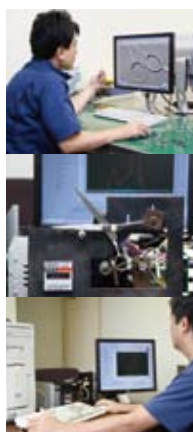
Our use of computer generated models to control our manufacturing process allows us to refine the blade and combine the faces to minimize precision deviation. The final touch in our manufacturing process to combine the blades is done by hand through experienced and skilled craftsmen.



Research and Development

Our products are the end results of numerous monitoring of hair stylists, in depth research of their needs coupled with review of the basic elements which led to the creation of the development and research group today.

To ensure our customers are satisfied and willing to purchase our products, the Research and Development group reviews the data in an objective and unbiased process to develop an evaluation standard which will meet the most demanding customer requirement in the market.



Corporate History



Toyosaku Inoue, the founder of the company was born in 1894 in Tanushimaru, Kurume city Fukuoka, Japan.

The company was established in 1917 under the name TOKOSHA Company in Tokyo, originally manufacturing medical cutting tools at the time of the start-up.

Manufacturing scissors for barbers was started in 1921. As this year was the year of the Rooster, the company took the Rooster as its trademark, establishing its position as a maker of scissors for barbers.



At the time, Japanese barbers were known to be professionals and paid great attention to the scissors as their primary tool to deliver performance. Our preparation and effort to meet this market requirement was the driving factor which led our company to export our products overseas, and to be considered as one of the top brands of the world.

The JOEWELL brand was established in 1975 as the premium scissor manufacturer to the beauty salons. Through exporting our products overseas, it quickly positioned itself as the number 1 brand in Japan.



JOEWELL®

The start of our business overseas in countries such as the United-States, Europe and Asia taught us to develop products which were specifically designed to meet individual market needs. With a product line of over 200 models, JOEWELL is a brand loved by hair stylists around the world.

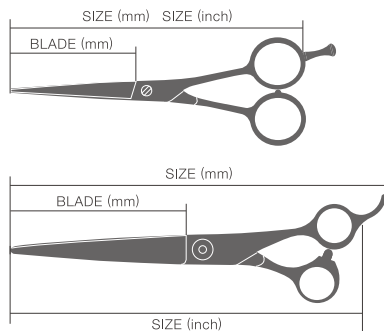


Specification of scissors

JOEWELL delivers products, which better match customer needs for more precise and consistent quality by using a uniform system from design consideration during new product development to standardization and quality control in the manufacturing process.

1. Size of scissors

The size of scissors is usually indicated in inches. The short ones are 4.5 inches, and long ones are up to about 7 inches. The indication in inches is not the length of the blade but the length from the blade edge to finger ring. Size is selected depending on the cut techniques, and popular sizes differ between countries and regions. Shorter scissors are more suitable for detailed work, and longer scissors are more suitable for powerful work. Cutting accurately in a straight line is the basic of the blunt cut and, therefore, the 5-inch to 6-inch size is the mainstream. The characteristics of long scissors enable efficient work because more hair can be cut at one time, and a higher flexibility can be achieved depending on the method of use.



Length of Scissors

4 1/2" (shorter) ~ 7" (longer)



2. Material

1) Material for the blade

Material for blade is one of the most important elements in the quality of scissors. To achieve a better edge and durability, JOEWELL uses the following original blade materials.

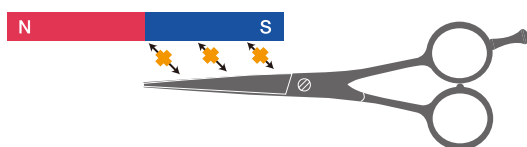
a. Supreme Stainless Alloy

Top quality special alloys born through the pursuit of ultra-fine composition. This material was developed from the long-term experience in manufacturing techniques and the accumulation of user comments and is suitable for hairdressing scissors. It has the best edge sharpness and durability.

b. Cobalt Base Alloy

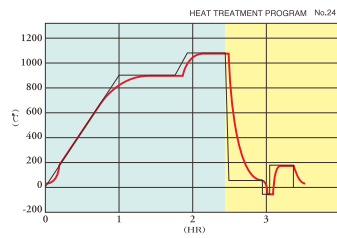
Based on the scarce metal cobalt, it includes chrome, tungsten, and carbon. Cobalt base alloys do not require heat treatment as the material already has hardness, which is suitable for blades. The other characteristics include chemical-resistance and rust-resistance. JOEWELL uses CBA1, which has higher hardness and longer life, and is suitable for dry hair, and CBA12, which has lower hardness and the characteristic of soft cutting.

Compared to cobalt base alloys, stainless has greater hardness but cobalt has higher wear resistance. Therefore, looking at all the elements, a cobalt base alloy has a longer life. Stainless requires heat treatment but cobalt does not. Cobalt is not magnetic; therefore, you can determine whether it is a cobalt base alloy or stainless (stainless including cobalt) by placing a magnet over the blade. Some products claiming to be cobalt are actually stainless. By placing a magnet over the blade, the material can be distinguished from a cobalt base alloy or stainless.



COBALT Base Alloy is not Magnetic!

c. Latest heat treatment techniques



Heat treatment is applied to stainless blade materials except for cobalt base alloys. A computer-controlled, full automatic vacuum heat treatment method is adopted. It can maximize the quality of the material and achieve consistent heat treatment. JOEWELL

manufactures its products at the highest level of hardness that is practically possible, and the hardness is 15% higher than the general hardness of most of competitors' products. It produces the best edge and durability.

2) Material for the handle

JOEWELL is also concerned about the handle material. We use nickel-less (0.6% or less) stainless in most of our products to ensure against metal (nickel) allergies. The countermeasure against nickel allergies is specially demanded in Europe so most of JOEWELL products in Europe are nickel allergy resistant. Also, because of the hard material used, the handle is difficult to be deformed (scissors do not easily go out of tune), and its face is difficult to get scratched. Please see details of nickel contents on Page 19.

3. Design of the handle

Please select the most suitable handle shape depending on hand size, experience, and cut techniques.

1) Symmetric Handle

The symmetry of the handle design is widely appreciated as the basic style for beauty salons. Symmetric design makes it possible to use both sides of the scissors or to change the way the scissors are held for a greater degree of freedom.



Design of Handle

Symmetric ~ Offset



2) Offset Handle

The length of the handle grip differs between still blade and moving blade. Offset handles easily fit the hand so the wrist, elbow, and shoulder do not tire easily when opening or closing the scissors. It is especially easy and popular for the ordinary blunt cut. Another name for this is the ergonomic handle. Various angles and designs are available in offset types so please select according to your preference.

3) The size of the finger hole

Regular and Small sizes are available. A finger ring can be attached to reduce the size of the finger hole. Please select the size according to your finger size and fitness.



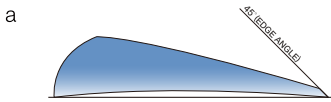
4. Blade shape

1) Blade setting

The convex blade is sharp for softer cutting while the flat (single bevel blade) is superior for lightweight durability because the whole blade can be designed flat. Tokosha scissors are available in four blade shapes.

a. The Standard JOEWELL Blade Flat Single Bevel Blade

This is the most popular, easy to use, and JOEWELL world standard original blade. Because this is a flat blade and the blade body is light, a liting cut is possible. Other characteristics include a flat face that fits the hair and comb face.



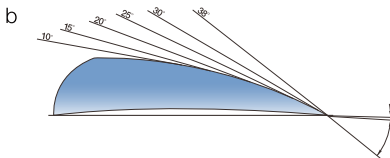
b. Convex Blade

Convex Pro Blade

In pursuit of sharp, smooth cutting, this has the sharpest blade angle and setting. Final finishing is manually done by craftsman to achieve an artistic cutting. Because the cross section of the blade shape is large, it is powerful. Because the point of the blade is smaller than a hair, hairs will not fly about.

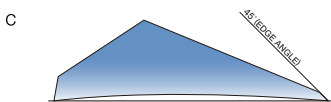
Convex Shape Blade

The Convex Shape Blade was developed by implementing the latest technology on top of the advantage of the convex blade. It maintains soft, sharp cutting and is suitable for anyone.



c. Sword Shape Blade

This type is a sword shape. The power is delivered to the point of the blade with this design.



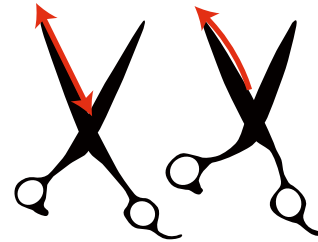
2) Width of blade

Various blade widths are available. With the wider blade, it is more powerful for cutting hair, and the cut is light. Those with a thin blade point are suitable for detailed work.



3) Blade lines

Various blade lines are available from straight to curved. Generally, the straighter blade is called a straight blade, the ordinary one is called a willow blade, and the curved one is called a bamboo leaf blade. JOEWELL designs blade lines according to the characteristic of each item. The straighter the blade, the easier it is to hold hair for cutting without having the hair slide. The bigger the curve, the greater the amount of hair that will slide when cutting for a smooth, soft cut. The bamboo leaf blade type, which has the biggest curve, is suitable for slide cuts and slicing.



5. Screw on the scissors

Flat screws will not hinder cutting because it has no bulge. Adjustable screws can easily be adjusted to suit your preference.

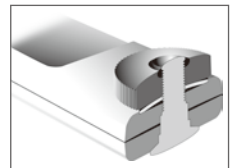
1) Precision Flat Screw

This is an ultra-precise NC manufacturing screw with little looseness. Because this screw is flat, it does not hinder the comb when cutting and can be adjusted with a coin (with 1.7 mm or less thickness).



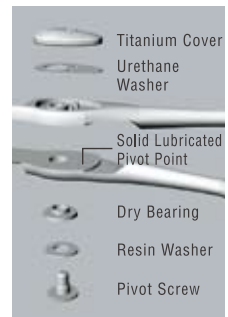
2) Thin Adjustable Screw

The fine screw thread in the 0.35mm size makes fine tuning possible, and the locking and tension functions prevent loosening. By embedding a part of the screw, a more compact design was achieved.



3) Dry Bearing Screw System

The dry bearing screw system is applied at the screw part to pursue smooth opening/closing operation. The solid lubricated pivot point contact and the dry bearing are made of resin. The features are light, smooth opening/closing operation, maintenance free, lightweight, and thin body.



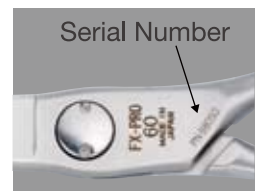
6. Removable Finger Rest

This is finger rest with washer, which does not easily come off, is removable and easy to use. Fitness to fingers was taken into consideration in the design.



7. Serial Number

Each product has unique serial number, which is utilized for quality control and after-sales service management.



■ SUPREME

JOEWELL SUPREME applies symmetric or ergonomic design and a Hard Titanium Coating in consideration of comfortable operation. Based on field proven data, we have thoroughly pursued sharp cutting quality and durability, which are the basic performances of scissors. With the combination of the Cobalt Base Alloy CBA-1, the Sword Blade or the Convex Blade, and the Dry Bearing Screw System, we have materialized superior durability that is *more than 2.5 times longer than ordinary scissors and outstanding cutting quality with sharpness, smoothness, and powerfulness. Technologies that have been accumulated by Joewell / Tokosha for 90 years are integrated into JOEWELL SUPREME.

SUPREME SCS5000

Size:5" Blade:49mm Weight:38.0g Size of Finger Hole:Regular
Sword Blade,
Cobalt Base Alloy CBA-1,
Dry Bearing Screw System,
Removable Finger Rest,
Hard Titanium Coating



SUPREME SCS5500

Size:5.5" Blade:56mm Weight:41.5g Size of Finger Hole:Regular
Sword Blade,
Cobalt Base Alloy CBA-1,
Dry Bearing Screw System,
Removable Finger Rest,
Hard Titanium Coating



SUPREME SCS5250F

Size:5.25" Blade 49mm Weight 42.0g Size of Finger Hole: Regular
Sword Blade,
Cobalt Base Alloy CBA-1,
Dry Bearing Screw System,
Removable Finger Rest,
Hard Titanium Coating



SUPREME SCS5750F

Size:5.75" Blade 56mm Weight 46.0g Size of Finger Hole: Regular
Sword Blade,
Cobalt Base Alloy CBA-1,
Dry Bearing Screw System,
Removable Finger Rest,
Hard Titanium Coating



SUPREME SCC5700F

Size:5.7" Blade:57mm Weight:49.5g Size of Finger Hole:Smaller
Convex Pro Blade,
Cobalt Base Alloy CBA-1,
Dry Bearing Screw System,
Permanent Finger Rest,
Hard Titanium Coated Handle



SUPREME SCC6000F

Size:6" Blade:64mm Weight:52.0g Size of Finger Hole:Smaller
Convex Pro Blade,
Cobalt Base Alloy CBA-1,
Dry Bearing Screw System,
Permanent Finger Rest,
Hard Titanium Coated Handle



Good Design Award is operated by Japan Industrial Design Promotion Organization.

Cobalt Base Alloy CBA-1

The Cobalt Base Alloy CBA-1, of which "more than 2.5 times" durability has been proven, is applied for the blade material. Since its cobalt containing ratio is about 50%, it is very hard and has superior wear resistance.

■ Chemical composition of Cobalt Base Alloy CBA-1

Cobalt (Co) $\geq 49.5\%$	Chrome (Cr) 30%	Iron (Fe) $\leq 3\%$	Hardness(HV) 637
Nickel (Ni) $\leq 3\%$	Tungsten (W) 12%	Carbon (C) 2.5%	

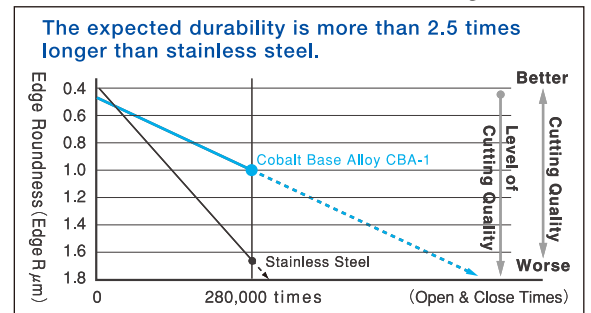
*Durability of Cobalt base alloy is based on the filed-proven data. However, it may change depending on cut technique, hair characteristics and other conditions.

Cooperative parties providing various kinds of research data:

Iwate Industrial Research Institute

Professor Motomura's office of the Course in Mechanical Engineering of the Department of Science and Engineering, Waseda University.

■ Change of sharpness (roundness) of edge (experiments with the test machine for examining)



Hard Titanium Coating With this coating, it is not necessary to be conscious of metal allergies.

Black Cobalt

Black cobalt favored by top artists around the world. Lifting design and tough material (cobalt). Best suited for dry cut (tapering). Also for blunt cut, stroke cut and slide cut etc.

Cobalt 4 1/2

Size:4.5" Blade:41mm Weight:26.5g
 Size of Finger Hole:Regular
 The Standard JOEWELL Blade,
 Cobalt Base Alloy CBA-1,
 Precision Flat Screw,
 Removable Finger Rest



Cobalt 5

Size:5" Blade:48mm Weight:32.5g
 Size of Finger Hole:Regular
 The Standard JOEWELL Blade,
 Cobalt Base Alloy CBA-1,
 Precision Flat Screw,
 Removable Finger Rest



Cobalt 5 1/2

Size:5.5" Blade:53mm Weight:37.0g
 Size of Finger Hole:Regular
 The Standard JOEWELL Blade,
 Cobalt Base Alloy CBA-1,
 Precision Flat Screw
 Removable Finger Rest



Cobalt 6

Size:6" Blade:64mm Weight:41.5g
 Size of Finger Hole:Regular
 The Standard JOEWELL Blade,
 Cobalt Base Alloy CBA-1,
 Precision Flat Screw,
 Removable Finger Rest



Cobalt 5 1/2F Offset

Size:5.5" Blade:53mm Weight:36.5g
 Size of Finger Hole:Smaller
 The Standard JOEWELL Blade,
 Cobalt Base Alloy CBA-1,
 Precision Flat Screw,
 Permanent Finger Rest



Cobalt

Amazing long life achieved by Cobalt Base Alloy. Best selling around the world since its debut in 1977.

Cobalt 4500

Size:4.5" Blade:41mm Weight:27.0g
 Size of Finger Hole:Regular
 The Standard JOEWELL Blade,
 Cobalt Base Alloy CBA-1,
 Precision Flat Screw,
 Removable Finger Rest



Cobalt 5000

Size:5" Blade:48mm Weight:32.5g
 Size of Finger Hole:Regular
 The Standard JOEWELL Blade,
 Cobalt Base Alloy CBA-1,
 Precision Flat Screw,
 Removable Finger Rest



Cobalt 5500

Size:5.5" Blade:53mm Weight:37.0g
 Size of Finger Hole:Regular
 The Standard JOEWELL Blade,
 Cobalt Base Alloy CBA-1,
 Precision Flat Screw,
 Removable Finger Rest



Cobalt 6000

Size:6" Blade:64mm Weight:41.5g
 Size of Finger Hole:Regular
 The Standard JOEWELL Blade,
 Cobalt Base Alloy CBA-1,
 Precision Flat Screw,
 Removable Finger Rest



Cobalt 5500F Offset

Size:5.5" Blade:53mm Weight:36.0g
 Size of Finger Hole:Smaller
 The Standard JOEWELL Blade,
 Cobalt Base Alloy CBA-1,
 Precision Flat Screw,
 Permanent Finger Rest



TR

Blue titanium coating + rubber coating on handle part realized moist feel to achieve excellent feel. Nickel allergy prevented, kind to hands.

Joewell TR525

Size:5.25" Blade:49mm Weight:38.5g
 Size of Finger Hole:Regular
 Convex Shape Blade,
 Supreme Stainless Alloy,
 Precision Flat Screw,
 Removable Finger Rest,
 Titanium & Rubber Coated Handle



Joewell TR575

Size:5.75" Blade:59mm Weight:41.0g
 Size of Finger Hole:Regular
 Convex Shape Blade,
 Supreme Stainless Alloy,
 Precision Flat Screw,
 Removable Finger Rest,
 Titanium & Rubber Coated Handle



Joewell TR55C

Size:5.5" Blade:56mm Weight:42.0g
 Size of Finger Hole:Smaller
 Convex Shape Blade,
 Supreme Stainless Alloy,
 Thin Adjustable Screw,
 Removable Finger Rest,
 Titanium & Rubber Coated Handle,



Joewell TR60C

Size:6" Blade:65mm Weight:44.5g
 Size of Finger Hole:Smaller
 Convex Shape Blade,
 Supreme Stainless Alloy,
 Thin Adjustable Screw,
 Removable Finger Rest,
 Titanium & Rubber Coated Handle,



Titanium & Rubber Coated Handle

Titanium and a rubber coating are applied to the handle. The characteristics are a soft touch, which cannot be achieved with metal, and a non-slip surface. Handles are coated with rubber this makes them smooth to the touch. And as there is no nickel in coating; it is ideal for hairdressers that sometimes suffer allergic reactions. (PAT.)



Y

New Ergonomic Designed Handle

Joewell Y525F

Size:5.25" Blade:48mm Weight:37.5g
 Size of Finger Hole:Regular
 The Standard JOEWELL Blade,
 Supreme Stainless Alloy,
 Precision Flat Screw,
 Removable Finger Rest



Joewell Y575F

Size:5.75" Blade:58mm Weight:40.5g
 Size of Finger Hole:Regular
 The Standard JOEWELL Blade,
 Supreme Stainless Alloy,
 Precision Flat Screw,
 Removable Finger Rest



FX-PRO

New designed FX 3 dimensional style grip with a twisted finger ring for a natural movement of thumbs, fingers and elbow. New scissors in pursuit of "easy to hold and use". Designed with well balanced. Designed for powerful and keen cutting.

Joewell FX-PRO 50

Size:5" Blade:47mm Weight:42.5g Size of Finger Hole:Regular
Sword & Flat Blade, Supreme Stainless Alloy,
Dry Bearing Screw System, Removable Finger Rest



Joewell FX-PRO 55

Size:5.5" Blade:54mm Weight:44.0g Size of Finger Hole:Regular
Sword & Flat Blade, Supreme Stainless Alloy,
Dry Bearing Screw System, Removable Finger Rest



Joewell FX-PRO 60

Size:6" Blade:63mm Weight:46.5g Size of Finger Hole:Regular
Sword & Flat Blade, Supreme Stainless Alloy,
Dry Bearing Screw System, Removable Finger Rest



FX

3D style grip. New scissors in pursuit of "easy to hold and use". Very popular model especially in U.S and Europe since its debut. Designed with a 3 dimensional style grip for a natural movement of thumbs, fingers and elbow. Well balanced. Designed for powerful and keen cutting.

Joewell FX50

Size:5" Blade:44mm Weight:43.0g Size of Finger Hole:Regular
The Standard JOEWELL Blade, Supreme Stainless Alloy,
Thin Adjustable Screw, Removable Finger Rest



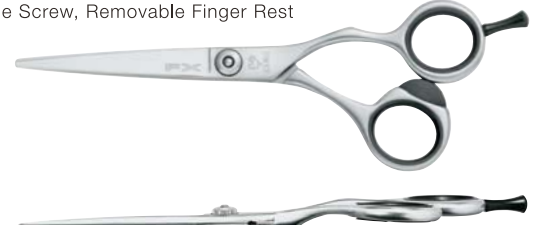
Joewell FX55

Size:5.5" Blade:55mm Weight:45.0g Size of Finger Hole:Regular
The Standard JOEWELL Blade, Supreme Stainless Alloy,
Thin Adjustable Screw, Removable Finger Rest



Joewell FX60

Size:6" Blade:64mm Weight:47.0g Size of Finger Hole:Regular
The Standard JOEWELL Blade, Supreme Stainless Alloy,
Thin Adjustable Screw, Removable Finger Rest



Sword & Flat Blade

FX-PRO

The back side is Flat blade and the top side is Sword blade. It enables accurate and stable scissors operation because the flat blade face fits the comb face and hair panel.

Sword Blade



Flat Blade



C-ONE

JOEWELL's offset handle standard type. Its design prevents fatigue on hand and elbow, and enables soft feel.

Joewell C-ONE 50

Size:5"
Blade:50mm
Weight:39.5g
Size of Finger Hole:Regular
The Standard JOEWELL Blade,
Supreme Stainless Alloy,
Precision Flat Screw,
Removable Finger Rest



Joewell C-ONE 55

Size:5.5"
Blade:54mm
Weight:43.0g
Size of Finger Hole:Regular
The Standard JOEWELL Blade,
Supreme Stainless Alloy,
Precision Flat Screw,
Removable Finger Rest



Joewell C-ONE 60

Size:6"
Blade:63mm
Weight:46.5g
Size of Finger Hole:Regular
The Standard JOEWELL Blade,
Supreme Stainless Alloy,
Precision Flat Screw,
Removable Finger Rest



Classic

This is the JOEWELL standard model, which made JOEWELL known throughout the world, has been selling around the world for over 30 years. No specific pattern and can be used for blunt cut, stroke cut and slide cut etc.

Joewell 45

Size:4.5" Blade:42mm Weight:28.0g
 Size of Finger Hole:Regular
 The Standard JOEWELL Blade,
 Supreme Stainless Alloy,
 Precision Flat Screw,
 Removable Finger Rest



Joewell 50

Size:5" Blade:48mm Weight:32.0g
 Size of Finger Hole:Regular
 The Standard JOEWELL Blade,
 Supreme Stainless Alloy,
 Precision Flat Screw,
 Removable Finger Rest



Joewell 55

Size:5.5" Blade:53mm Weight:36.5g
 Size of Finger Hole:Regular
 The Standard JOEWELL Blade,
 Supreme Stainless Alloy,
 Precision Flat Screw,
 Removable Finger Rest



Joewell 60

Size:6" Blade:65mm Weight:41.0g
 Size of Finger Hole:Regular
 The Standard JOEWELL Blade,
 Supreme Stainless Alloy,
 Precision Flat Screw,
 Removable Finger Rest



Joewell 65

Size:6.5" Blade:69mm Weight:45.5g
 Size of Finger Hole:Regular
 The Standard JOEWELL Blade,
 Supreme Stainless Alloy,
 Precision Flat Screw,
 Removable Finger Rest



Joewell 70

Size:7" Blade:82mm Weight:50.0g
 Size of Finger Hole:Regular
 The Standard JOEWELL Blade,
 Supreme Stainless Alloy,
 Precision Flat Screw,
 Removable Finger Rest



LX

A bump is on each side of symmetric handle. Fits hand, easy to use and enables powerful cutting.

Joewell LX45

Size:4.5" Blade:40mm Weight:32.5g
 Size of Finger Hole:Regular
 The Standard JOEWELL Blade,
 Supreme Stainless Alloy,
 Precision Flat Screw,
 Removable Finger Rest



Joewell LX50

Size:5" Blade:47mm Weight:45.5g
 Size of Finger Hole:Regular
 The Standard JOEWELL Blade,
 Supreme Stainless Alloy,
 Precision Flat Screw,
 Removable Finger Rest



Joewell LX55

Size:5.5" Blade:54mm Weight:48.0g
 Size of Finger Hole:Regular
 The Standard JOEWELL Blade,
 Supreme Stainless Alloy,
 Precision Flat Screw,
 Removable Finger Rest



Joewell LX60

Size:6" Blade:63mm Weight:50.5g
 Size of Finger Hole:Regular
 The Standard JOEWELL Blade,
 Supreme Stainless Alloy,
 Precision Flat Screw,
 Removable Finger Rest



Classic PRO

Light weight and smooth action. Special pointed tips - Ideal for precision cutting.
Blast process is done on handle part that a hand does not get sticky.

Symmetric Handle

Joewell Classic PRO 450

Size:4.5" Blade:43mm Weight:23.0g
Size of Finger Hole:Regular
Convex Shape Blade,
Supreme Stainless Alloy,
Precision Flat Screw,
Removable Finger Rest



Joewell Classic PRO 500

Size:5" Blade:50mm Weight:27.5g
Size of Finger Hole:Regular
Convex Shape Blade,
Supreme Stainless Alloy,
Precision Flat Screw,
Removable Finger Rest



Joewell Classic PRO 550

Size:5.5" Blade:60mm Weight:32.0g
Size of Finger Hole:Regular
Convex Shape Blade,
Supreme Stainless Alloy,
Precision Flat Screw,
Removable Finger Rest



Joewell Classic PRO 600

Size:6" Blade:68mm Weight:36.5g
Size of Finger Hole:Regular
Convex Shape Blade,
Supreme Stainless Alloy,
Precision Flat Screw,
Removable Finger Rest



Offset Handle

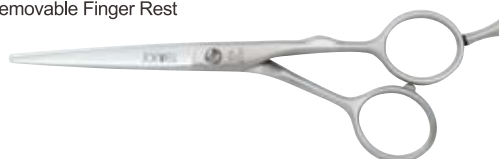
NEW Joewell Classic PRO 525F

Size:5.25" Blade: 50mm Weight: 33.0g
Size of Finger Hole: Regular
Convex Shape Blade,
Supreme Stainless Alloy,
Precision Flat Screw,
Removable Finger Rest



NEW Joewell Classic PRO 575F

Size:5.75" Blade: 60mm Weight: 36.5g
Size of Finger Hole: Regular
Convex Shape Blade,
Supreme Stainless Alloy,
Precision Flat Screw,
Removable Finger Rest



Joewell 70FC

7-inch, semi-offset handle with regular finger hole.

Joewell 70FC

Size:7" Blade:82mm Weight:68.5g
Size of Finger Hole:Regular
Convex Shape Blade,
Supreme Stainless Alloy,
Thin Adjustable Screw,
Removable Finger Rest



Convex GX

Developed as superior model of the basic model Classic series. Not only sharpness but also weight balance and fitness and good operability are pursued to the maximum. Highly functional basic scissors for new century.

Convex GXL50

Size:5" Blade:48mm Weight:41.0g
Size of Finger Hole:Regular
Convex Shape Blade,
Supreme Stainless Alloy,
Thin Adjustable Screw,
Removable Finger Rest



Convex GXL55

Size:5.5" Blade:58mm Weight:44.5g
Size of Finger Hole:Regular
Convex shape blade,
Supreme Stainless Alloy,
Thin Adjustable Screw,
Removable Finger Rest



Convex GXL60

Size:6" Blade:64mm Weight:50.0g
Size of Finger Hole:Regular
Convex Shape Blade,
Supreme Stainless Alloy,
Thin Adjustable Screw,
Removable Finger Rest



Convex CX

Offset Handle + Convex Shape Blade + Thin Adjustable Screw type. Comfortable feel and sharp cutting are realized.

Convex CX500

Size:5" Blade:49mm Weight:41.5g
Size of Finger Hole:Regular
Convex Shape Blade,
Supreme Stainless Alloy,
Thin Adjustable Screw,
Removable Finger Rest



Convex CX550

Size:5.5" Blade:54mm Weight:45.0g
Size of Finger Hole:Regular
Convex Shape Blade,
Supreme Stainless Alloy,
Thin Adjustable Screw,
Removable Finger Rest



Convex CX600

Size:6" Blade:63mm Weight:48.5g
Size of Finger Hole:Regular
Convex Shape Blade,
Supreme Stainless Alloy,
Thin Adjustable Screw,
Removable Finger Rest



NB

Bamboo Leaf Blade scissors. Can be used not only for slide cut but also ordinary cutting. Symmetry type and offset type are available.



Joewell NB50A

Size:5" Blade:48mm
Weight:32.0g
Size of Finger Hole:Regular
Bamboo Leaf Blade,
Supreme Stainless Alloy,
Precision Flat Screw,
Removable Finger Rest



Joewell NB55A

Size:5.5" Blade:54mm
Weight:38.0g
Size of Finger Hole:Regular
Bamboo Leaf Blade,
Supreme Stainless Alloy,
Precision Flat Screw,
Removable Finger Rest



Joewell NB60A

Size:6" Blade:64mm
Weight:42.0g
Size of Finger Hole:Regular
Bamboo Leaf Blade,
Supreme Stainless Alloy,
Precision Flat Screw,
Removable Finger Rest



Joewell NB50F

Size:5" Blade:50mm
Weight:42.5g
Size of Finger Hole:Regular
Bamboo Leaf Blade,
Supreme Stainless Alloy,
Precision Flat Screw,
Removable Finger Rest



Joewell NB55F

Size:5.5" Blade:55mm
Weight:45.0g
Size of Finger Hole:Regular
Bamboo Leaf Blade,
Supreme Stainless Alloy,
Precision Flat Screw,
Removable Finger Rest



R (curved) scissors

Vertically curved blade and it is easy to insert scissors vertically or diagonally.

Joewell 50R

Size:5" Blade:49mm Weight:33.0g
Size of Finger Hole:Regular

- *1 Curved Blade, Supreme Stainless Alloy, Precision Flat Screw, Removable Finger Rest



Joewell SDB58R

Size:5.8" Blade 60mm Weight 48.0g
Size of Finger Hole: Regular

- *2 Curved Bamboo Leaf Blade, Supreme Stainless Alloy, Thin Adjustable Screw, Removable Finger Rest



Joewell 55R

Size:5.5" Blade:55mm Weight:45.5g
Size of Finger Hole:Regular

- *1 Curved Blade, Supreme Stainless Alloy, Precision Flat Screw, Removable Finger Rest



Joewell SDB60R

Size:6.1" Blade:66mm
Weight:66.0g
Size of Finger Hole:Regular

- *2 Curved Bamboo Leaf Blade, Supreme Stainless Alloy, Thin Adjustable Screw, Removable Finger Rest



Thinner and lighter design on the whole that it is best suited for inner thinning or chop cut and point cut. (J50R & J55R)

Can be used not only for slide cut but also for a base cut.

Joewell GXR58

Size:5.8" Blade 64mm
Weight:50.5g
Size of Finger Hole:Regular

- *1 Curved Blade, Supreme Stainless Alloy, Thin Adjustable Screw, Removable Finger Rest



*1

Curved Blade

When putting scissors vertically into the hair or using just the point of blade, R scissors with the vertically curved blade has power. When putting the scissors vertically or diagonally into the hair bundle, it matches the cutting direction and head shape well. It is also good when making a curved line for a base cut or slide cut.

*2

Curved Bamboo Leaf Blade

With Bamboo leaf blade, the greater the amount of hair that will slide when cutting for a smooth. The curved blade makes the slide cutting in concave or convex much easier. Also it is good for point cut (or chop cut), when putting the scissors vertically into the hair bundle, it matches the cutting direction.

Left Handed

Scissors exclusively for left handed.

FX 3D Style Grip

NEW Joewell FX-L50

Size:5" Blade: 47mm Weight: 41.5g
Size of Finger Hole: Regular

- The Standard JOEWELL Blade, Supreme Stainless Alloy, Thin Adjustable Screw, Removable Finger Rest



Symmetric Handle

Joewell LH50

Size:5" Blade:49mm Weight:34.5g
Size of Finger Hole:Regular

- The Standard JOEWELL Blade, Supreme Stainless Alloy, Precision Flat Screw, Removable Finger Rest



NEW Joewell FX-L55

Size:5.5" Blade: 54mm Weight: 44.0g
Size of Finger Hole: Regular

- The Standard JOEWELL Blade, Supreme Stainless Alloy, Thin Adjustable Screw, Removable Finger Rest



Joewell LH55

Size:5.5" Blade:55mm Weight:37.0g
Size of Finger Hole:Regular

- The Standard JOEWELL Blade, Supreme Stainless Alloy, Precision Flat Screw, Removable Finger Rest

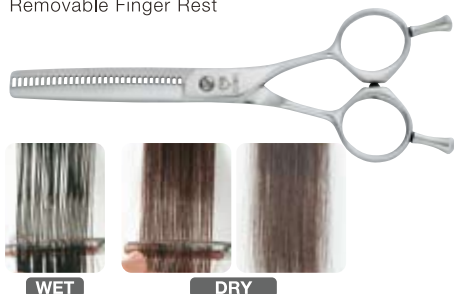


Thinning scissors

The handle is symmetric; finger rest can be attached and detached on both sides. Joewell E40 is the best selling model in Europe.

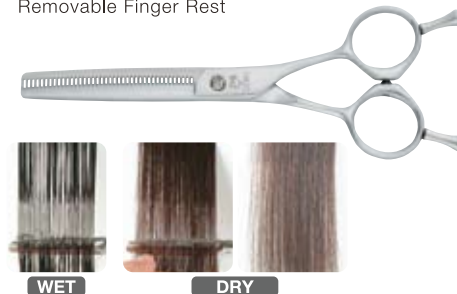
Joewell E30

30-tooth,*Cut ratio:15%
Size:5.6" Blade:61mm Weight:44.0g Size of Finger Hole:Regular
Supreme Stainless Alloy,
Precision Flat Screw,
Removable Finger Rest



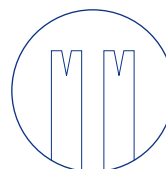
Joewell E40

40-tooth,*Cut ratio:35%
Size:5.6" Blade:61mm Weight:45.0g Size of Finger Hole:Regular
Supreme Stainless Alloy,
Precision Flat Screw,
Removable Finger Rest

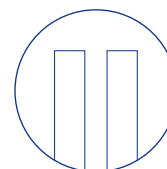


Joewell EF40

40-tooth with flat edge,*Cut ratio:5-10%
Size:5.9" Blade:61mm Weight:45.0g Size of Finger Hole:Regular
Supreme Stainless Alloy,
Precision Flat Screw,
Removable Finger Rest



E30, E40, E40RC
GXT30&GXT40



EF40&GXF40

Convex Thinning scissors

Design with the moving blade and still blade for the appropriate weight and the sharpness enables fine, powerful cutting.

Joewell GXT30

30-tooth,*Cut ratio:15%
Size:5.9" Blade:61mm Weight:55.0g Size of Finger Hole:Regular
Supreme Stainless Alloy,
Thin Adjustable Screw,
Removable Finger Rest



Joewell GXT40

40-tooth,*Cut ratio:35%
Size:5.9" Blade:61mm Weight:57.0g Size of Finger Hole:Regular
Supreme Stainless Alloy,
Thin Adjustable Screw,
Removable Finger Rest



Joewell GXF 40

40-tooth with flat edge,*Cut ratio:5-10%
Size:5.9" Blade:61mm Weight:57.0g
Size of Finger Hole:Regular
Supreme Stainless Alloy,
Thin Adjustable Screw,
Removable Finger Rest



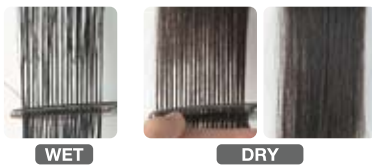
Texturizing scissors

Thinning for texture adjustment.

The root of thinning blade is extended and there is no groove at the top of thinning blade so hair is not easily caught, and scissors can be easily pulled even when inserting the scissors vertically or diagonally.

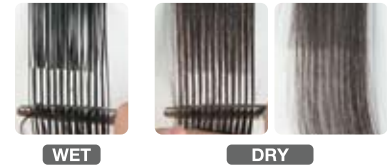
Joewell TX20

20-tooth without groove,*Cut ratio:15-20%
 Size:5.6" Blade:61mm Weight:45.0g
 Size of Finger Hole:Regular
 Supreme Stainless Alloy,
 Precision Flat Screw,
 Removable Finger Rest



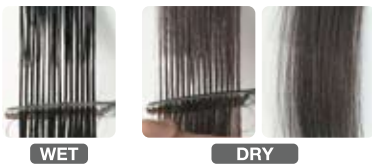
Joewell GXG14

14-tooth without groove,*Cut ratio:40-50%
 Size:5.9" Blade:62mm Weight:56.5g
 Size of Finger Hole:Regular
 Supreme Stainless Alloy,
 Thin Adjustable Screw,
 Removable Finger Rest



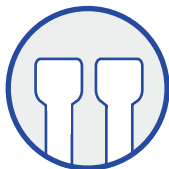
Joewell GXG17

17-tooth without groove,*Cut ratio:25-30%
 Size:5.9" Blade:62mm Weight:56.0g
 Size of Finger Hole:Regular
 Supreme Stainless Alloy,
 Thin Adjustable Screw,
 Removable Finger Rest



Joewell GXG20

20-tooth without groove,*Cut ratio:15-20%
 Size:5.9" Blade:62mm Weight:56.0g
 Size of Finger Hole:Regular
 Supreme Stainless Alloy,
 Thin Adjustable Screw,
 Removable Finger Rest



TX20, GXG14
 GXG17&GXG20

Hair easily comes off as the root of thinning blade is extended.

*Cut ratio depends on cut technique, hair characteristics, and hair condition.



▣ Craft

Beautiful and excellent design and balance. Total balance is good, easy to use, powerful and good sharpness. Suitable not only for ordinary cut but also for slide cut or such because of the bamboo leaf blade shape.

Craft CR-01F

Size:6.5" Blade:73mm Weight:62.0g
 Size of Finger Hole:Smaller
 Convex Pro Blade,
 Supreme Stainless Alloy,
 Thin Adjustable Screw,
 Permanent Finger Rest



▣ Z

Thin lightweight offset type. Z with removable finger rest and ZII with permanent finger rest are available.

Joewell ZII 55CX

Size:5.5" Blade:57mm Weight:38.0g
 Size of Finger Hole:Smaller
 Convex Shape Blade,
 Supreme Stainless Alloy,
 Thin Adjustable Screw,
 Permanent Finger Rest



Joewell ZII 60CX

Size:6" Blade:66mm Weight:41.0g
 Size of Finger Hole:Smaller
 Convex Shape Blade,
 Supreme Stainless Alloy,
 Thin Adjustable Screw,
 Permanent Finger Rest



Joewell Z55C

Size:5.5" Blade:57mm Weight:38.0g
 Size of Finger Hole:Smaller
 The Standard JOEWELL Blade,
 Supreme Stainless Alloy,
 Thin Adjustable Screw,
 Removable Finger Rest



Joewell Z60C

Size:6" Blade:66mm Weight:41.0g
 Size of Finger Hole:Smaller
 The Standard JOEWELL Blade,
 Supreme Stainless Alloy,
 Thin Adjustable Screw,
 Removable Finger Rest



▣ DC

6.75-inch, shorter offset and longer blade length.

Joewell DC675

Size:6.75" Blade:83mm Weight:65.5g Size of Finger Hole:Smaller
 Convex Pro Blade, Supreme Stainless Alloy, Thin Adjustable Screw, Permanent Finger Rest



▣ Cobalt Convex

Cobalt Base Alloy is used from blade to pivot point. Convex finished sharp blade. Offset handle to prevent fatigue on hand and elbow. Best suited for blunt cut.

Cobalt Convex **CCX550F**

Size:5.5" Blade:57mm Weight:53.0g
 Size of Finger Hole:Smaller
 Convex Pro Blade,
 Cobalt Base Alloy CBA-12,
 Thin Adjustable Screw,
 Permanent Finger Rest



Cobalt Convex **CCX600F**

Size:6" Blade:69mm Weight:56.0g
 Size of Finger Hole:Smaller
 Convex Pro Blade,
 Cobalt Base Alloy CBA-12,
 Thin Adjustable Screw,
 Permanent Finger Rest



▣ Cobalt Long

Cobalt **6700**

Size:6.7" Blade:76mm Weight:54.0g
 Size of Finger Hole:Smaller
 Convex Pro Blade,
 Cobalt Base Alloy CBA-12,
 Thin Adjustable Screw,
 Permanent Finger Rest,
 Super Oil Polymer Pivot Point



Cobalt **7000**

Size:7" Blade:84mm Weight:57.0g
 Size of Finger Hole:Smaller
 Convex Pro Blade,
 Cobalt Base Alloy CBA-12,
 Thin Adjustable Screw,
 Permanent Finger Rest,
 Super Oil Polymer Pivot Point



Super Oil Polymer Pivot Point

Special resin and oil are attached to the touch spot so opening and closing are smoother.



Page	Series	Item	Size	Material	Blade	Finger Hole	Screw	Finer Rest	Material&Coating of Handle	Page
6	SUPREME Cobalt Sword	SUPREME SCS5000	● 5.0"	Cobalt Base Alloy #1	Sword	Regular	Dry Bearing System	Removable	Hard Titanium Coating+*Nickel-less	6
		SUPREME SCS5500	● 5.5"							
SUPREME SCS5250F		● 5.25"								
SUPREME SCS5750F		● 5.75"								
SUPREME Cobalt Convex	SUPREME SCC5700F	● 5.7"	Cobalt Base Alloy #1	Convex Pro	Smaller	Dry Bearing System	Permanent	Hard Titanium Coating		
	SUPREME SCC6000F	● 6.0"								
7	Black Cobalt	Cobalt 4 1/2	● 4.5"	Cobalt Base Alloy #1	Standard	Regular	Precision Flat	Removable	Black Coating + *Nickel-less	7
		Cobalt 5	● 5.0"							
Cobalt 5 1/2		● 5.5"								
Cobalt 6		● 6.0"								
Cobalt 5 1/2F (Offset)		● 5.5"	Smaller			Permanent				
Cobalt	Cobalt 4500	● 4.5"	Cobalt Base Alloy #1	Standard	Regular	Precision Flat	Removable	*Nickel-less		
	Cobalt 5000	● 5.0"								
Cobalt 5500	● 5.5"									
Cobalt 6000	● 6.0"									
Cobalt 5500F (Offset)	● 5.5"	Smaller			Permanent					
8	TR	Joewell TR525	● 5.25"	Supreme Stainless Alloy	Convex Shape	Regular	Precision Flat	Removable	Titanium & Rubber+*Nickel-less	8
		Joewell TR575	● 5.75"							
TR w/adjustable screw	Joewell TR55C	● 5.5"	Supreme Stainless Alloy	Convex Shape	Smaller	Thin Adjustable	Removable	Titanium & Rubber		
	Joewell TR60C	● 6.0"								
Y	Joewell Y525F	● 5.25"	Supreme Stainless Alloy	Standard	Regular	Precision Flat	Removable	*Nickel-less		
	Joewell Y575F	● 5.75"								
9	FX-PRO	Joewell FX-PRO 50	● 5.0"	Supreme Stainless Alloy	Sword & Flat	Regular	Dry Bearing System	Removable	*Nickel-less	9
		Joewell FX-PRO 55	● 5.5"							
Joewell FX-PRO 60		● 6.0"								
FX	Joewell FX50	● 5.0"	Supreme Stainless Alloy	Standard	Regular	Thin Adjustable	Removable	*Nickel-less		
	Joewell FX55	● 5.5"								
	Joewell FX60	● 6.0"								
C-ONE	Joewell C-ONE 50	● 5.0"	Supreme Stainless Alloy	Standard	Regular	Precision Flat	Removable	*Nickel-less		
	Joewell C-ONE 55	● 5.5"								
	Joewell C-ONE 60	● 6.0"								
10	Classic	Joewell 45	● 4.5"	Supreme Stainless Alloy	Standard	Regular	Precision Flat	Removable	*Nickel-less	10
		Joewell 50	● 5.0"							
Joewell 55		● 5.5"								
Joewell 60		● 6.0"								
Joewell 65		● 6.5"								
Joewell 70		● 7.0"								
LX	Joewell LX45	● 4.5"	Supreme Stainless Alloy	Standard	Regular	Precision Flat	Removable	*Nickel-less		
	Joewell LX50	● 5.0"								
	Joewell LX55	● 5.5"								
	Joewell LX60	● 6.0"								
11	Classic PRO	Joewell Classic PRO 450	● 4.5"	Supreme Stainless Alloy	Convex Shape	Regular	Precision Flat	Removable	*Nickel-less	11
		Joewell Classic PRO 500	● 5.0"							
Joewell Classic PRO 550		● 5.5"								
Joewell Classic PRO 600		● 6.0"								
Joewell Classic PRO 525F		● 5.25"								
Joewell Classic PRO 575F		● 5.75"								
J70FC	Joewell 70FC	● 7.0"	Supreme Stainless Alloy	Convex Shape	Regular	Thin Adjustable	Removable	**Regular		

Page	Series	Item	Size	Material	Blade	Finger Hole	Screw	Finer Rest	Material&Coating of Handle	Page
12	Convex GX	Convex GXL50	● 5.0"	Supreme Stainless Alloy	Convex Shape	Regular	Thin Adjustable	Removable	*Nickel-less	12
		Convex GXL55	● 5.5"							
		Convex GXL60	● 6.0"							
	Convex CX	Convex CX500	● 5.0"	Supreme Stainless Alloy	Convex Shape	Regular	Thin Adjustable	Removable	*Nickel-less	
		Convex CX550	● 5.5"							
		Convex CX600	● 6.0"							
	NB	Joewell NB50A	● 5.0"	Supreme Stainless Alloy	Bamboo Leaf	Regular	Precision Flat	Removable	*Nickel-less	
		Joewell NB55A	● 5.5"							
		Joewell NB60A	● 6.0"							
		Joewell NB50F	● 5.5"							
		Joewell NB55F	● 6.0"							
	13	R Curved scissors	Joewell 50R	● 5.0"	Supreme Stainless Alloy	Curved	Regular	Precision Flat	Removable	
Joewell 55R			● 5.5"							
Joewell GXR58			● 5.8"	Curved Bamboo Leaf		Thin Adjustable				
Joewell SDB58R			● 5.8"							
Joewell SDB60R			● 6.0"							
FX Left Handed		Joewell FX-L50	● 5.0"	Supreme Stainless Alloy	Standard	Regular	Thin Adjustable	Removable	*Nickel-less	
		Joewell FX-L55	● 5.5"							
Left Handed		Joewell LH50	● 5.0"	Supreme Stainless Alloy	Standard	Regular	Precision Flat	Removable	**Regular	
		Joewell LH55	● 5.5"							
14		Thinning scissors	Joewell E30	● 5.6"	Supreme Stainless Alloy	30-tooth	Regular	Precision Flat	Removable	*Nickel-less
			Joewell E40	● 5.6"		40-tooth				
			Joewell EF40	● 5.6"		40-tooth with flat edge				
	Joewell GXT30		● 5.9"	30-tooth		Thin Adjustable				
	Joewell GXT40		● 5.9"	40-tooth						
	Joewell GXF40		● 5.9"	40-tooth with flat edge						
15	Texturizing scissors	Joewell TX20	● 5.6"	Supreme Stainless Alloy	20-tooth without groove	Regular	Precision Flat	Removable	*Nickel-less	
		Joewell GXG14	● 5.9"		14-tooth without groove					
		Joewell GXG17	● 5.9"		17-tooth without groove					
		Joewell GXG20	● 5.9"		20-tooth without groove					
16	CRAFT	Craft CR-01F	● 6.5"	Supreme Stainless Alloy	Convex Pro	Smaller	Thin Adjustable	Permanent	**Regular	
	Z II	Joewell ZII 55CX	● 5.5"	Supreme Stainless Alloy	Convex Shape	Smaller	Thin Adjustable	Permanent	**Regular	
		Joewell ZII 60CX	● 6.0"							
	Z	Joewell Z55C	● 5.5"	Supreme Stainless Alloy	Standard	Smaller	Thin Adjustable	Removable	**Regular	
		Joewell Z60C	● 6.0"							
	DC	Joewell DC675	● 6.75"	Supreme Stainless Alloy	Convex Pro	Smaller	Thin Adjustable	Permanent	**Regular	
	17	Cobalt Convex	Cobalt Convex CCX550F	● 5.5"	Cobalt Base Alloy #12	Convex Pro	Smaller	Thin Adjustable	Permanent	**Regular
			Cobalt Convex CCX600F	● 6.0"						
Cobalt Long		Cobalt 6700	● 6.7"	Cobalt Base Alloy #12	Convex Pro	Smaller	Thin Adjustable	Permanent	**Regular	
		Cobalt 7000	● 7.0"							

* "JOEWELL" and "🐼" are trademark of Tokosha Co.,Ltd. * Specification is subject to change without notice.

* The scissors are shown 40% of actual size, except 30% of actual size on NB, page 12 & R, page 13.

- Symmetric Handle
- Offset Handle
- Thinning Scissors & Special Models

Nickel contents

Material of Handle: *Nickel-less = less than 0.6%, **Regular = about 5%
 Coating (Titanium Coating, Titanium & Rubber Coating, Rubber Coating & Black Coating): less than 0.6%
 Removable Finger Rest: less than 0.6%



TOKOSHA CO., LTD.

6-12-16 Honkomagome, Bunkyo-ku, Tokyo 113-0021 JAPAN

Telephone: +81-3-3945-4011 Facsimile: +81-3-3945-4012

<http://www.joewell.co.jp>

0320091000